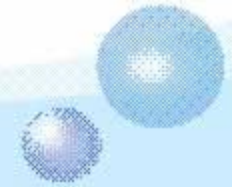


The background features a central globe with a grid of latitude and longitude lines. The globe is surrounded by several swirling, translucent blue lines that create a sense of motion and depth. To the right of the globe, there are silhouettes of modern skyscrapers, suggesting a global or urban context. Small, stylized white starburst or snowflake-like shapes are scattered throughout the scene, adding to the dynamic feel. The overall color palette is dominated by various shades of blue, with a gradient from light to dark.

**XIECHEN PRECISION METAL CO.,LTD**

**XIECHEN PRECISION (HK) CO.,LTD**



# Contents



**XIECHEN COMPANY**



**IN-HOUSE CAPABILITY**



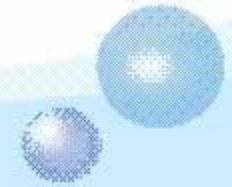
**FACTORY EQUIPMENT**



**FACTORY LOCATION**



# XIECHEN COMPANY

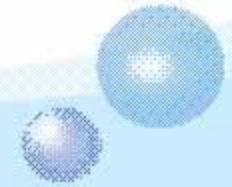


Xiechen Precision Metal Co., Ltd was founded in 2004, located in changping town, dongguan city, guangdong province, more than 200 employees, which covers an area of 15000 m<sup>2</sup>, with a total investment of RMB 58 million.

**XieChen** are aiming to build a one-stop pattern of metal part for customer and always working hard for it. With the principle of good faith management and quality first, Many world-renowned enterprises are willing to establish long-term business relationship with XIECHEN. We also won great kindness from the market and customers for produced CNC parts, Stamping parts, Lathe parts、Springs&Screws. Our products are used in many industries, such as: Digital camera、Drone、Automotive、Mobil phone、official accessories & Areaspace

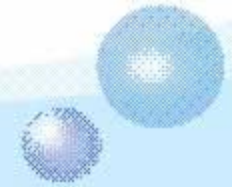
**XieChen** have been certified with ISO 9001、ISO 14001 system certification and IATF 16949 , we promise to provide world class Service and Quality to grow up with all customers together.





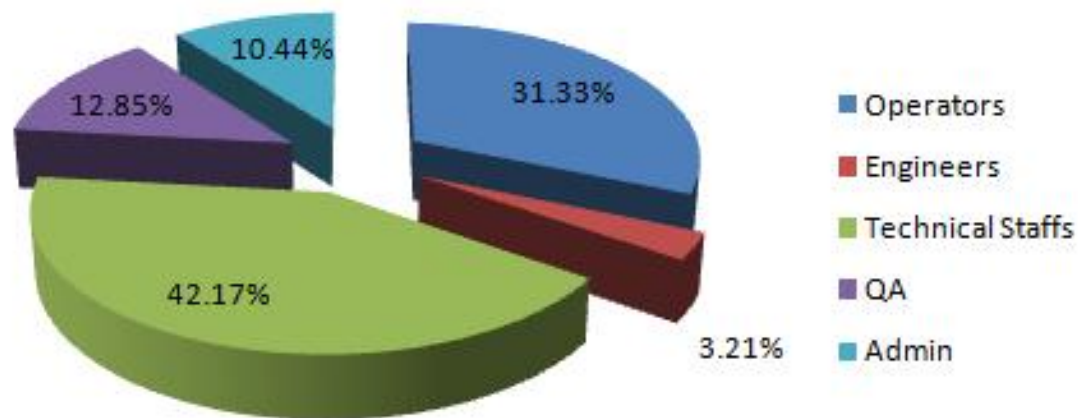
# Development History

2004-06	Xiechen Precision (HK) Co.,Ltd. was founded.
2007-07	Xiechen Precision (SZ) Co.,Ltd. was founded. We expanded our business to screw manufacturing.
2008-06	We expanded our business to spring manufacturing.
2009-06	Move factory from Shenzhen to Dongguan. Dong Guan Xiechen Precision Metal Co., Ltd.was founded. We expanded business to Die Casting. We expanded business to Stamping. We expanded business to Lathe Process
2011-09	Be awarded ISO9001/ISO14001 certificate.
2013-03	We expanded business to CNC Process
2017-09	Be awarded IATF:16949 certificate.



# Employee Distribution

<b>Operators</b>	<b>80</b>
<b>Engineers</b>	<b>15</b>
<b>Technical Staffs</b>	<b>113</b>
<b>QA</b>	<b>37</b>
<b>Admin</b>	<b>4</b>
<b>Total</b>	<b>249</b>



**Sincere Co-operation!!**

**Win-Win Partnership and Progress!!**

# Key Customer

## Long Term Relationship With Famous Brand

### Customer From Japan:

Cannon, Nikon, HITACHI, EPSON, Panasonic, TDK, PENTAX, Murata etc.

**Canon**



**HITACHI**  
Inspire the Next

**EPSON**  
EXCEED YOUR VISION

**Panasonic**  
ideas for life

THE NEW VALUE FRONTIER  
**KYOCERA**

**TDK**

**PENTAX**



株式会社 **東京鋏兼**  
TOKYO BYOKANE CO.,LTD.



**muRata**  
INNOVATOR IN ELECTRONICS

### Customer From Euro/America:

GOPRO, 3M, USA B/E, BOEING, Bosch, etc.



**3M** Science.  
Applied to Life.™



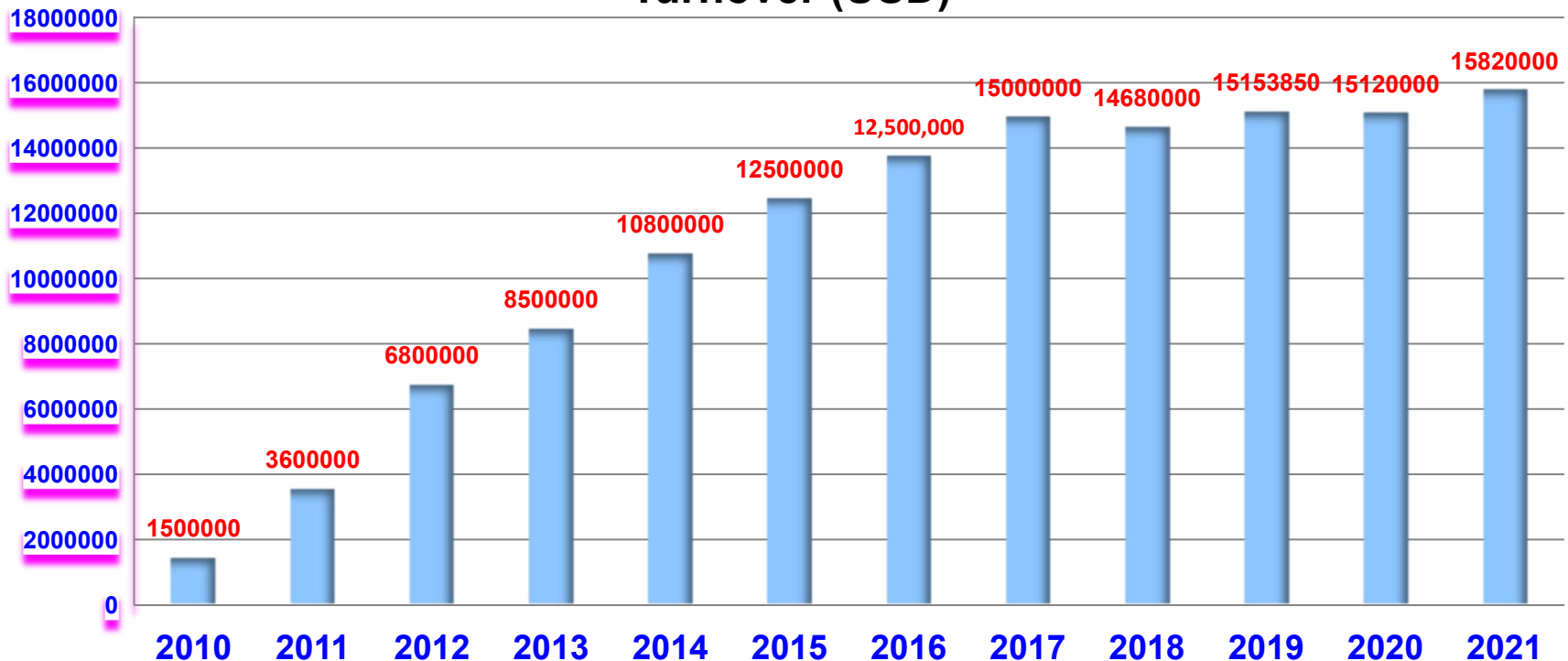
**BOSCH**  
Invented for life

**BOEING**  
波音

# Annual Turnover

Year	2010	2011	2012	2013	2014	2015	2016	2017	2018	2019	2020	2021
Turnover (USD)	1,500,000	3,600,000	6,800,000	8,500,000	10,800,000	12,500,000	13,800,000	15,000,000	14,680,000	15,153,850	15,120,000	15,820,000

## Turnover (USD)





# IN-HOUSE CAPABILITY



**CNC&Lathe Machining center**

**Anodize Factory**

**Screw Manufacturing**

**Spring Manufacturing**

**Metal Stamping**



# CNC Lathe / Machining center

## CNC (68set total) Machining center

- Fanuc 32 Sets
- LITZ 35 Sets
- NC (31sets) Lathes
- Doosan Machine 2 Sets
- TUSGAMI 14 Sets
- MIYANO 6 Sets
- GOODWAY 2 Sets
- Other 15 Sets



# CNC Lathe / Machining center

## Main Products

Own patented products——Manual aperture



协辰精密光圈（光圈）规格技术参数一览表

协辰: 日期: 2017年7月16日

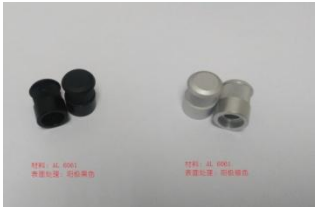
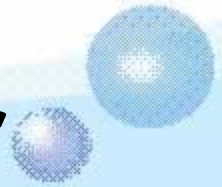
NO	品名	光圈（光圈）技术参数							备注		
		外径	内径	厚度	叶片数	最大光圈	最小光圈	摆杆角度		摆杆方向	摆杆长度
1	80光圈	80	60	6	16	60	3	103°	顺时针调（大调小）	5（1.7）	
2	40光圈	40	28	6	16	28	3	97.5°	顺时针调（小调大）	4（1.7）	
3	24光圈	24	15	5	12	15	1.5	98°	顺时针调（小调大）	4（1.7）	
4	22.0光圈	23	8	4	8	8.2	0.5	82°	顺时针调（大调小）	1	
5	20光圈	20	11	6	10	11	0.7	96.5°	顺时针调（小调大）	7（2.0）	
6	19.8光圈A	20	12	5	10	12	0.7	98.5°	顺时针调（小调大）	4（1.7）	
7	19.8光圈B	20	12	5	12	12	0.7	98.5°	顺时针调（小调大）	4（1.7）	
8	34光圈	34	19	6	10	19	1	93.5°	顺时针调（大调小）	4.2（2.0）	



Design and manufacture according to customer's requirements.



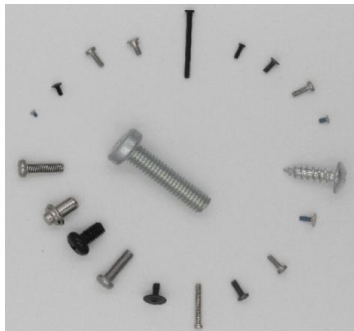
# CNC Lathe / Machining center



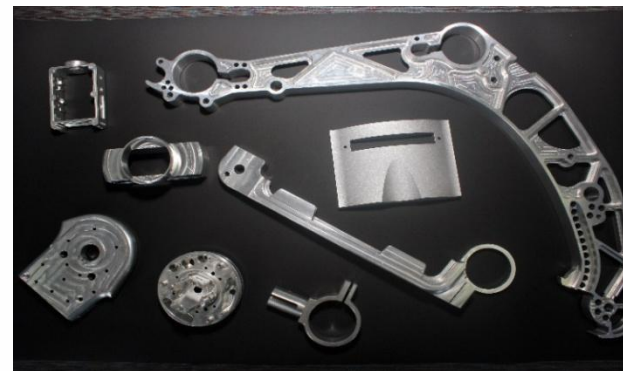
Drone Parts



Assembly Unit



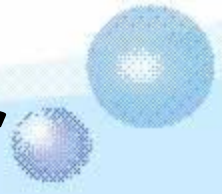
Automotive Parts



Aircraft Parts



# CNC Lathe / Machining center



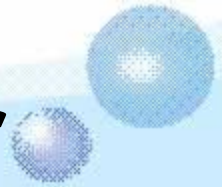
Parts for Optical products

Material: Aluminum, Copper, Stainless steel

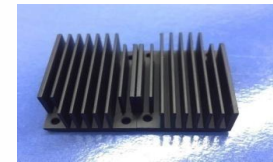




# CNC Lathe / Machining center

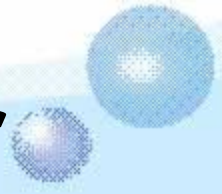


## Products





# CNC Lathe / Machining center



## CNC lathe parts

Material: Aluminum, Copper, SUS



# CNC Lathe / Machining center



汽車、航空  
Automotive &  
Aerospace

OA、PC、ATM

CNC製品

醫療、自動化  
Medical  
Equipment

携帯電話  
Mobile  
Phone

家用電氣  
Household  
Appliances

# Anodize Factory

Auto anodize line



Reflow Dryer

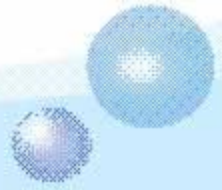


Sandblasting Machine





# Anodize Factory



**Racking**



**Anode Tank and Cleaning Pool**



**Dryer**



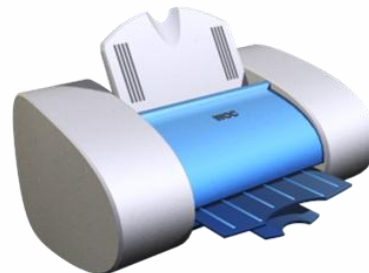
**Packing**

# Screw Manufacturing

Screw Machines :56 Sets

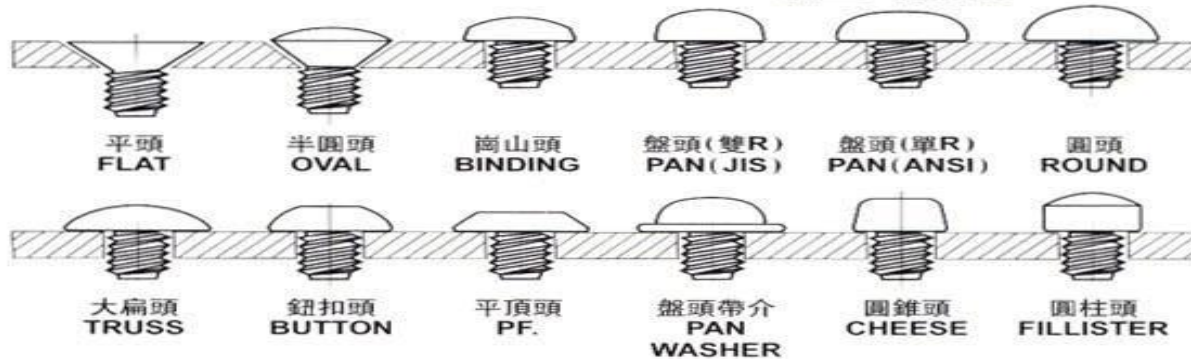


**mitsui**

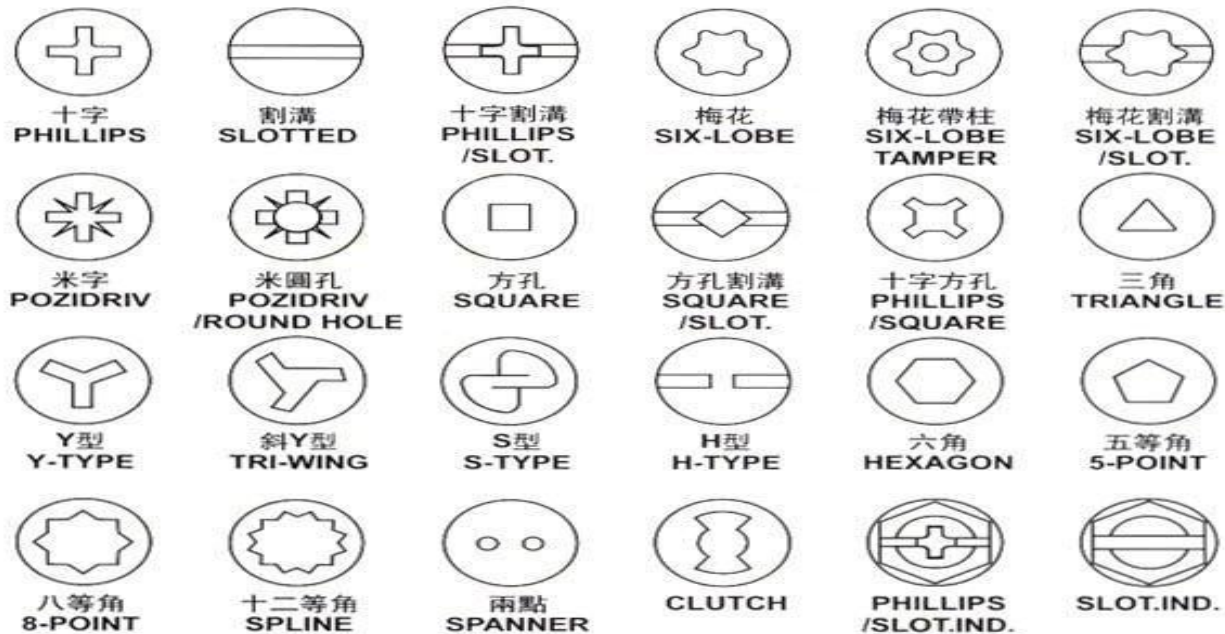


# Screw Manufacturing

## SCREW HEAD STYLES (頭型對照表)



## SCREW DRIVERS (槽型對照表)



# Screw Manufacturing

## Products description :



### 0# Machine Screw

Spec: M1.2\*1.4mm

Feature: Tiny

Model: BTP1.2\*1.4HGPBKNE



### Painted Screw

Spec: 1.4\*2.4mm

Feature: Think, Anti-rust

Model: MBI1.4\*2.4H+GPBKNI+N



### Flat Screw

Spec: M1.4\*2.6mm

Feature: Think, Big-Head

Model: ML1.4\*2.6H+GPNI



### 0#P-type Machine Screw

Spec: 1.4\*3.0mm

Feature: Big/Round-Head

Model: BTP1.4\*3.0H+GPNI



### 0#P-type Plastic Machine Screw

Spec: 1.7\*2.5mm

Feature: Anti-Slipping

Model: MI1.7\*2.5H+GPNI+NYLOK



### Self-Tapping Screw

Spec: 1.7\*7.0mm

Feature: Lock tight

Model: BTP1.7\*7.0H+GPBKNI



### Stage-Screw

Spec: 1.7\*1.5

Feature: Good for design

Model: ML1.7\*1.5H+GPNIL+NYLOK



### Double-thread Screw

Spec: 1.4\*2.8

Feature: Lock tight

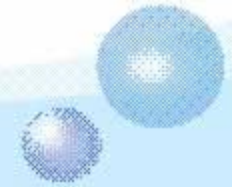
Model: PSI1.4\*2.8H+GPNI

Capability: Max: M10

Min : M0.8



# Spring Manufacturing



## Spring Machines :

CNC Manufacturing Machines: 13 Sets

torsion spring machines : 10 Sets

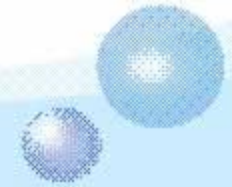
Tension spring machine : 4 Sets

Compression spring machine :11 Sets





# Spring Manufacturing



Torsion Spring  
Wire Dia : 0.15mm  
Outer Dia : 4.3 mm  
Length : 2.65 mm



Torsion Spring  
Wire Dia : 0.12mm  
Outer Dia : 4.24 mm  
Length : 3.3 mm



Compression Spring  
Wire Dia : 0.09mm  
Outer Dia : 0.8 mm  
Length : 6.2 mm



Torsion Spring  
Wire Dia : 0.15 mm  
Outer Dia : 1.0 mm  
Length : 2.8 mm  
Treatment : Gold Plated



Torsion Spring  
Wire Dia : 0.5mm  
Outer Dia : 4.1/10.6 mm  
Length : 10.6 mm



Torsion Spring  
Wire Dia : 0.15 mm  
Outer Dia : 0.8/1.05 mm  
Length : 1.77 mm  
Treatment : Gold Plated



Torsion Spring  
Wire Dia : 0.15mm  
Outer Dia : 1.37 mm  
Length : 2.6 mm  
Treatment : Gold Plated

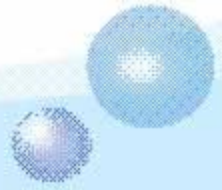


Extension Spring  
Wire Dia : 0.08mm  
Outer Dia : 1.08 mm  
Length : 3.0 mm

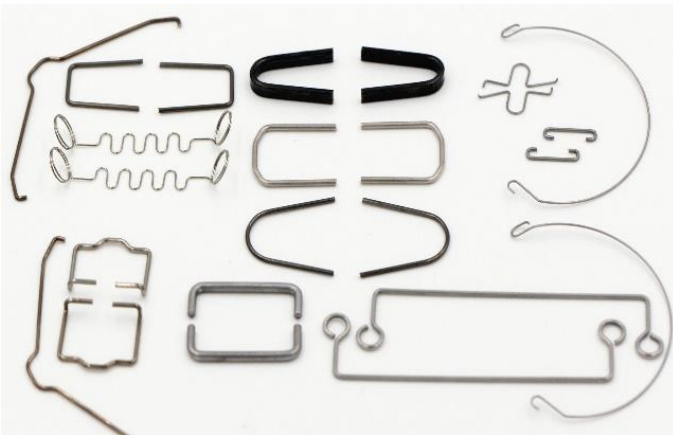
**Capability: Min. Wire:  $\phi$  0.05mm Max. Wire:  $\phi$  5.0mm**



# Spring Manufacturing

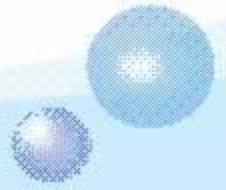


## Automotive springs



**Wire Diameter:  $\Phi 2 - \Phi 5$**

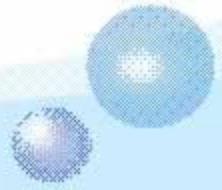
**Material: SWP-B/SUS324**



# Stamping

## Production facilities



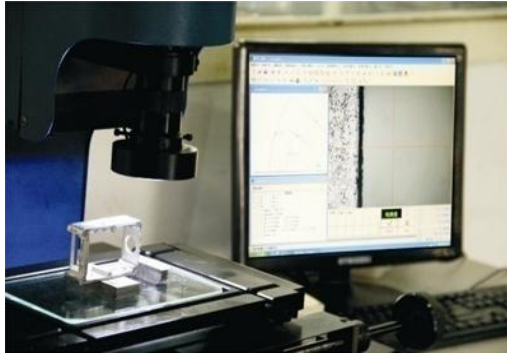


# Stamping

## Main products



# Inspection Equipment



Mitutoyo 2D Projector



Height measurer

Digital micrometer



Hardness measurer

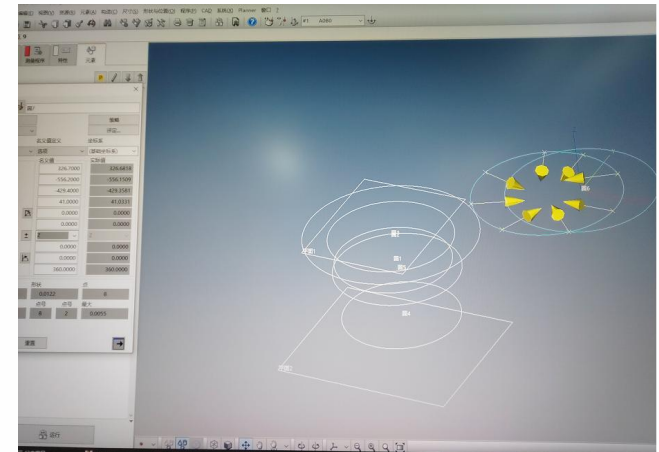


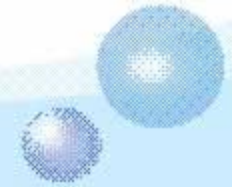
Caliper

# Inspection Equipment

## ZEISS Tertiary Tester

Three-coordinates measuring machine





# Inspection Equipment

Screw Vision Inspection Machine : 4sets



# Inspection Equipment

## Spring tester



## Projector



# Quality Management System

ISO9001

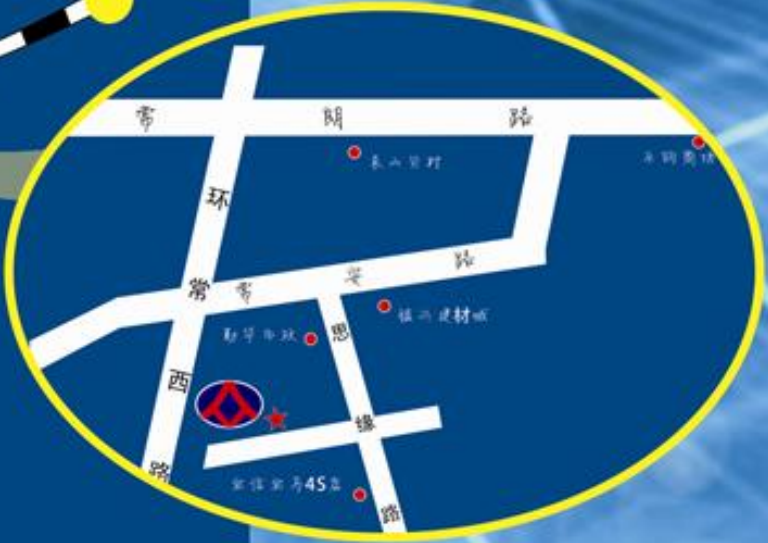
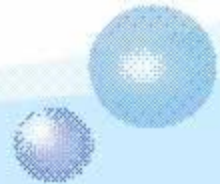
ISO14001

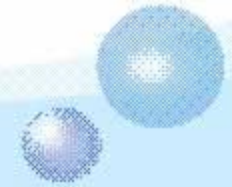
IATF 16949





# Factory Address





***Thank you very much!***

TEL:(86)769 - 83900959

FAX: (86)769 - 83900969

[Http://www.xiechenprecision.com](http://www.xiechenprecision.com)

Address : Siyuan Road 19#,Yuanshanbei Village,Changping  
Town,Dongguan City

**XIECHEN PRECISION METAL CO.,LTD**  
**XIECHEN PRECISION (HK) CO.,LTD**